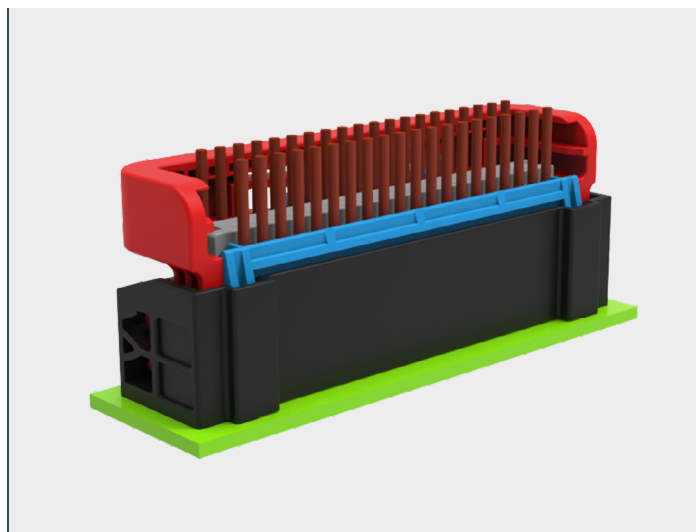


# INTRODUCING FLIP-N-LOK WIRE-TO-BOARD SIGNAL CONNECTOR

- Modular high-density connector
- Lever locking mechanism that helps improve ergonomics
- Housing featuring built-in error-resistance elements



TE Connectivity, (TE), introduces FLIP-N-LOK, wire-to-board Signal connector. This is a high-density, multi-load solution that can replace multiple signal headers with a single high-density header, freeing up board space, enabling a cleaner layout, and reducing assembly takt times. Its innovative lever design improves ergonomics by reducing mating force and also functions as a secure locking mechanism. Polarization features, terminal keying and terminal positions assurance (TPA) available.

## TARGET MARKETS

- Appliances
- HVAC
- Industrial machinery
- BESS
- Medical

## APPLICATIONS

- Major Home Appliances
- HVAC controllers
- Factory automation equipment
- Battery management systems
- Patient monitoring systems

## DESIGN-IN QUESTIONS

- Do you need extra space on your PCB?
- Do you need faster takt times?
- Do you need better ergonomics for large connectors?

## KEY BENEFITS

- Modular high-density connector
- Lever locking mechanism that helps improve ergonomics
- Polarization feature on housing
- Terminal keying for error minimizing assembly
- Mates to standard 1.57mm thick PCB
- Suitable for wave-soldering process, (Peak temp range: 255°C to 270C  
Duration: 2-5 Sec)

## LEARN MORE

- [Landing Page](#)
- [Product Flyer](#)